

---

# Flygt 3315.095/185

---

# Table of Contents

<b>1 Introduction.....</b>	<b>2</b>
1.1 Specially approved products.....	2
<b>2 Product Description.....</b>	<b>3</b>
2.1 The data plate.....	3
2.2 Approvals.....	4
2.3 Product denomination.....	5
<b>3 Exploded View.....</b>	<b>6</b>
3.1 Drive Unit.....	6
3.1.1 Standard and explosion-proof.....	6
3.2 Hydraulic Unit.....	8
3.2.1 N_ LT.....	8
3.2.2 N_ LT.....	9
3.2.3 N_ MT.....	10
3.2.4 N_ HT.....	11
3.3 Installation Components.....	12
3.3.1 NP.....	12
3.3.2 NS.....	13
3.3.3 NT.....	14
3.3.4 NZ.....	15
<b>4 List of Parts.....</b>	<b>16</b>
4.1 3315.095/185.....	16

# 1 Introduction

## Purpose of this manual

The purpose of this manual is to provide necessary information on spare parts and accessories order.

## Disclaimer

Always use genuine Flygt parts. The use of other spare parts or accessories can invalidate any claims for warranty or compensation. Xylem does not take any responsibility for damages that are caused by the use of non-original parts. For more information, contact your local sales and service representative.

## Data for ordering spare parts

The following information is needed for spare part orders:

- Serial number of the product
- Part number
- Quantity of bulk material, see \* in tables

## 1.1 Specially approved products

### Qualification of personnel

Only Xylem or Xylem-authorized service personnel may undertake repair work on specially approved products.

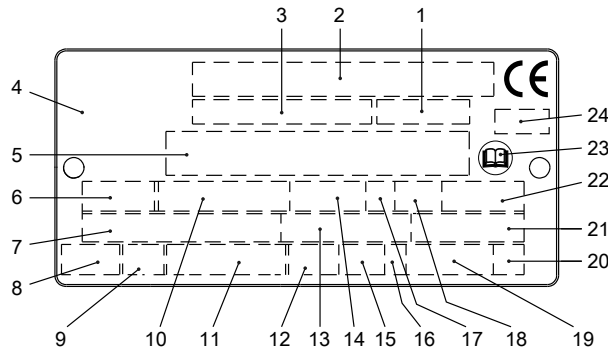
### Dimensional accuracy inspection

Spare parts marked with (Ex) after the part number are subject to dimensional accuracy inspection when used in specially approved products.

# 2 Product Description

## 2.1 The data plate

The data plate is a metal label that is located on the main body of the products. The data plate lists key product specifications. Specially approved products also have an approval plate.



WS006257A

1. Curve code or Propeller code
2. Serial number
3. Product number
4. Country of origin
5. Additional information
6. Phase; type of current; frequency
7. Rated voltage
8. Thermal protection
9. Thermal class
10. Rated shaft power
11. International standard
12. Degree of protection
13. Rated current
14. Rated speed
15. Maximum submergence
16. Direction of rotation: L=left, R=right
17. Duty class
18. Duty factor
19. Product weight
20. Locked rotor code letter
21. Power factor
22. Maximum ambient temperature
23. Read installation manual
24. Notified body, only for EN-approved Ex products

Figure 1: The data plate

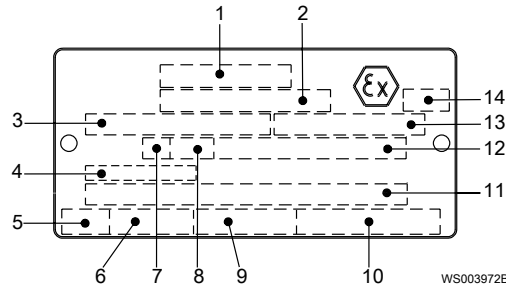
## 2.2 Approvals

### Product approvals for hazardous locations

Pump	Approval
<ul style="list-style-type: none"> <li>3315.095</li> </ul>	European Norm (EN) <ul style="list-style-type: none"> <li>ATEX Directive</li> <li>EN 60079-0:2012/A11:2013, EN 60079-1:2007, EN 13463-1:2009, EN 13463-5:2011</li> <li>Ex I M2 c Ex d I Mb</li> <li>Ex II 2 G c Ex d IIB T3 Gb</li> </ul>
	IEC <ul style="list-style-type: none"> <li>IECEx scheme</li> <li>IEC 60079-0, IEC 60079-1</li> <li>Ex d I Mb</li> <li>Ex d IIB T3 Gb</li> </ul>
	FM (FM Approvals) <ul style="list-style-type: none"> <li>Explosion proof for use in Class I, Div. 1, Group C and D</li> <li>Dust ignition proof for use in Class II, Div. 1, Group E, F and G</li> <li>Suitable for use in Class III, Div. 1, Hazardous Locations</li> </ul>
	CSA Ex <ul style="list-style-type: none"> <li>Explosion proof for use in Class I, Div. 1, Group C and D</li> </ul>

#### EN approval plate

This illustration describes the EN approval plate and the information that is contained in its fields.

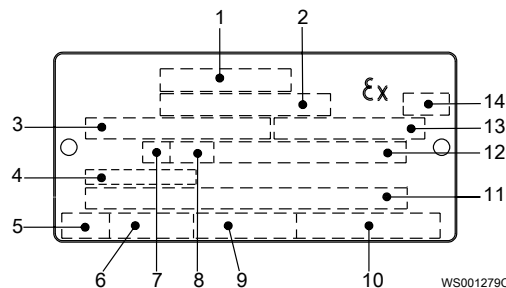


1. Approval
2. Approval authority and Approval number
3. Approved for drive unit
4. Cable entry temperature
5. Stall time
6. Starting current or Rated current
7. Duty class
8. Duty factor
9. Input power
10. Rated speed
11. Additional information
12. Maximum ambient temperature
13. Serial number
14. ATEX marking

#### IEC approval plate

This illustration describes the IEC approval plate and the information that is contained in its fields.

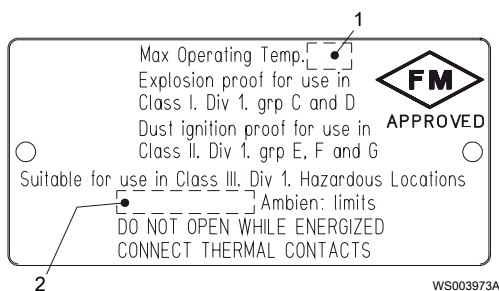
International Norm; not for EU member countries.



1. Approval
2. Approval authority and Approval number
3. Approved for drive unit
4. Cable entry temperature
5. Stall time
6. Starting current or Rated current
7. Duty class
8. Duty factor
9. Input power
10. Rated speed
11. Additional information
12. Maximum ambient temperature
13. Serial number
14. ATEX marking

FM approval plate

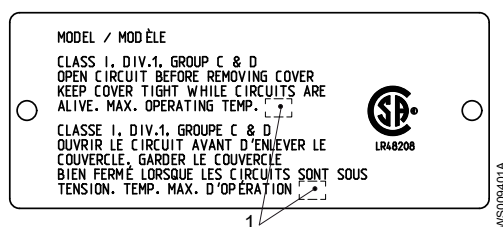
This illustration describes the FM approval plate and the information that is contained in its fields.



- 1. Temperature class
- 2. Maximum ambient temperature

CSA approval plate

This illustration describes the CSA approval plate and the information that is contained in its fields.



- 1. Temperature class

## 2.3 Product denomination

Reading instruction

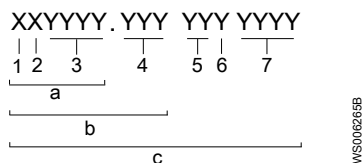
In this section, code characters are illustrated accordingly:

X = letter

Y = digit

The different types of codes are marked up with a, b and c. Code parameters are marked up with numbers.

Codes and parameters



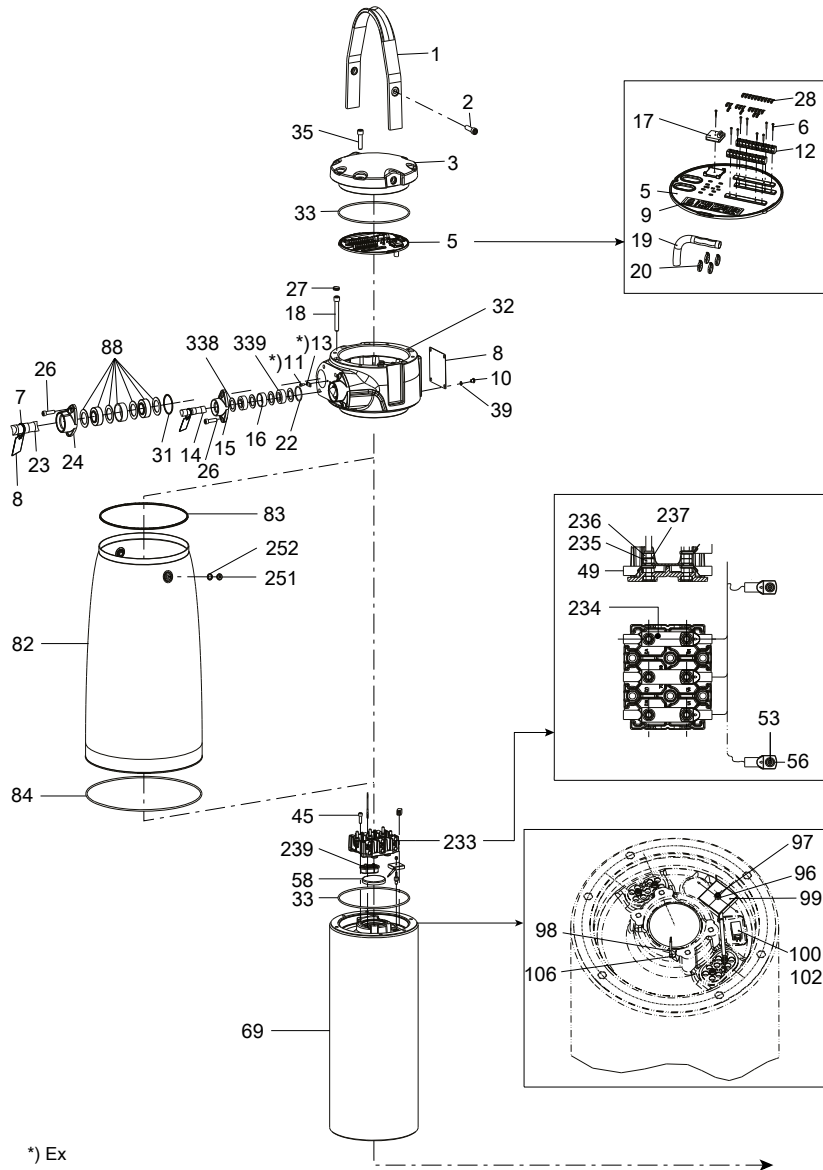
Type of Callout	Number	Indication
Type of code	a	Sales denomination
	b	Product code
	c	Serial number
Parameter	1	Hydraulic end
	2	Type of installation
	3	Sales code
	4	Version
	5	Production year
	6	Production cycle
	7	Running number

# 3 Exploded View

## 3.1 Drive Unit

### 3.1.1 Standard and explosion-proof

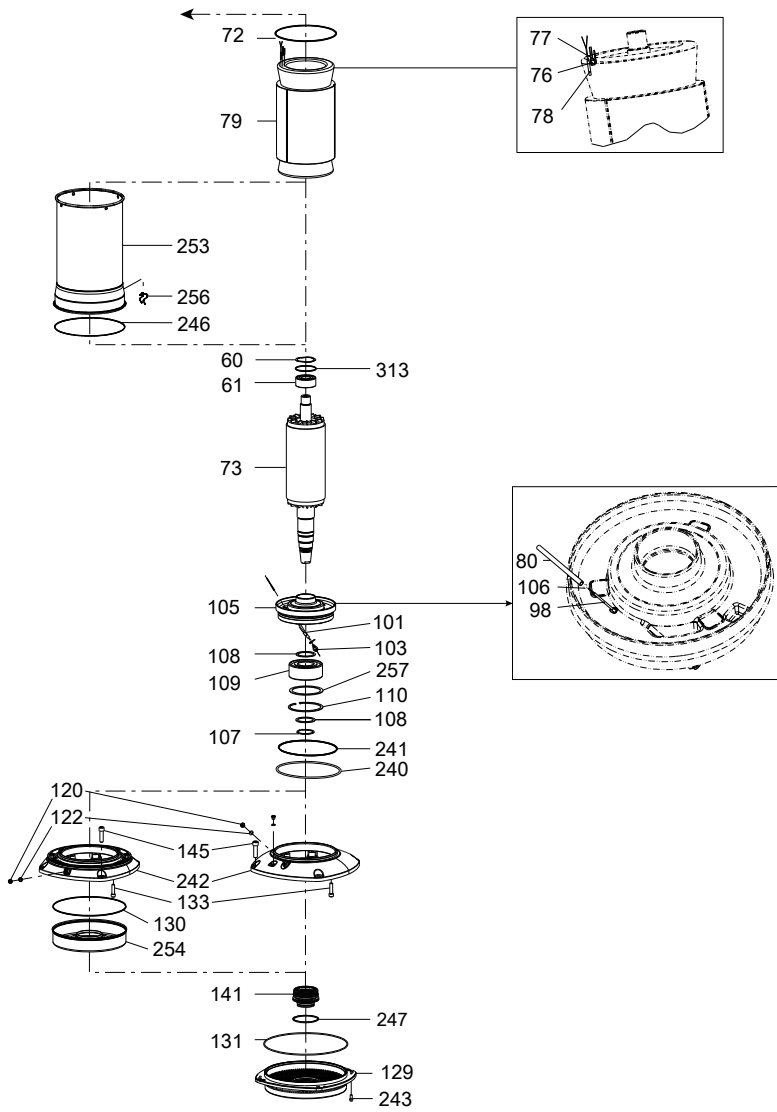
3315



\*) Ex

31586C

3315



31997A

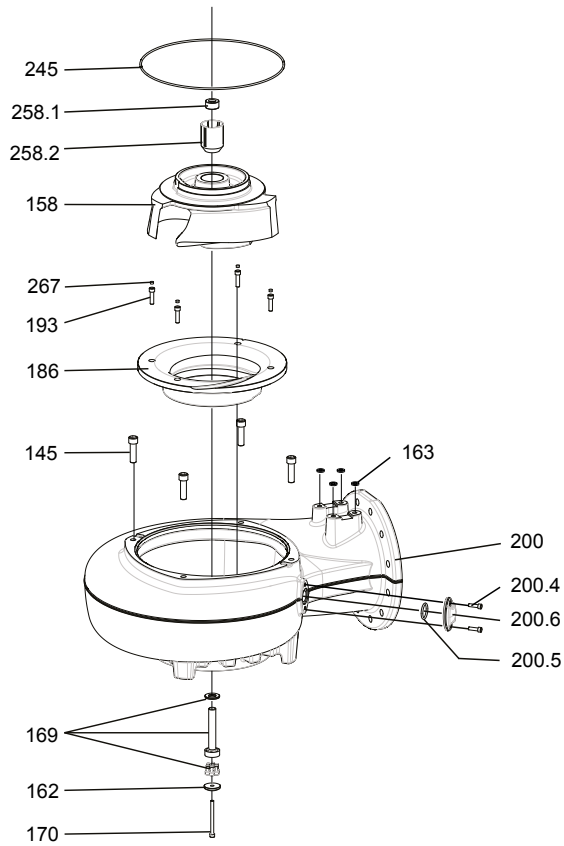


## 3.2 Hydraulic Unit

### 3.2.1 N\_LT

6-pole, curve: 620 – 628

N\_ 3315 LT 6-pole

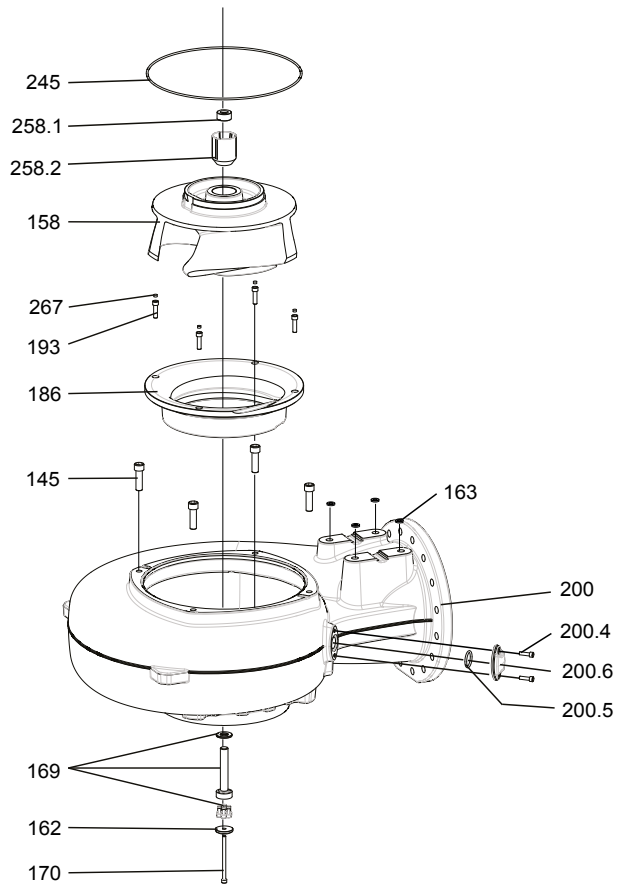


31421

3.2.2 N\_LT

8-pole, curve: 810 – 817

N\_3315 LT 8-pole

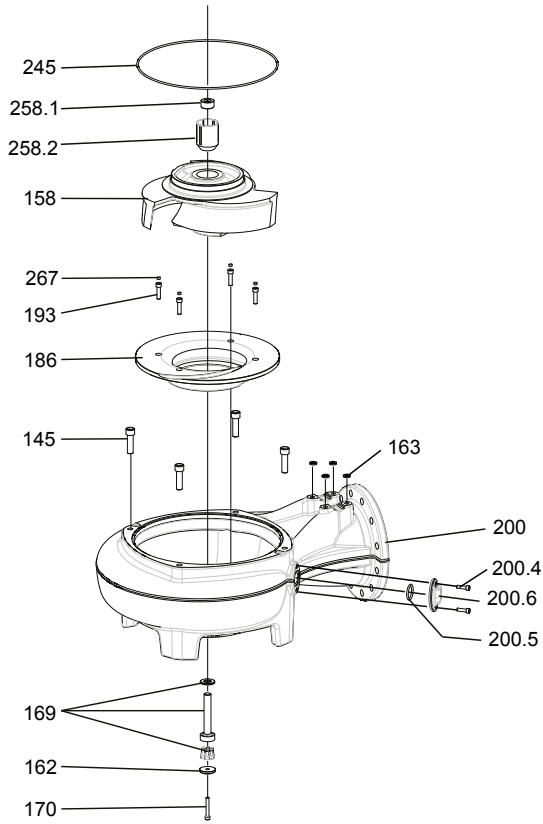


31422

### 3.2.3 N\_MT

Curve: 630 – 638

N\_3315 MT

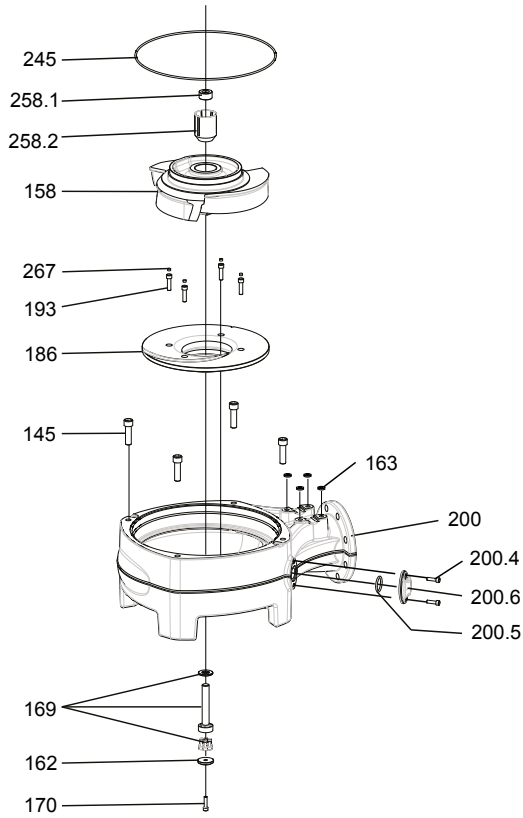


31420

3.2.4 N\_HT

Curve: 450 – 460

N\_3315 HT

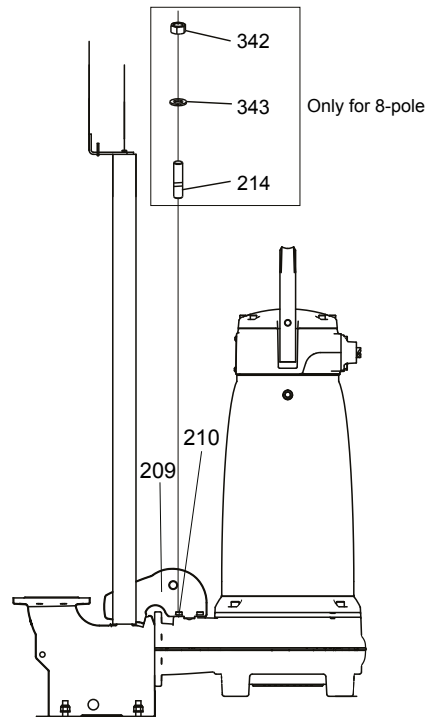


31419

### 3.3 Installation Components

#### 3.3.1 NP

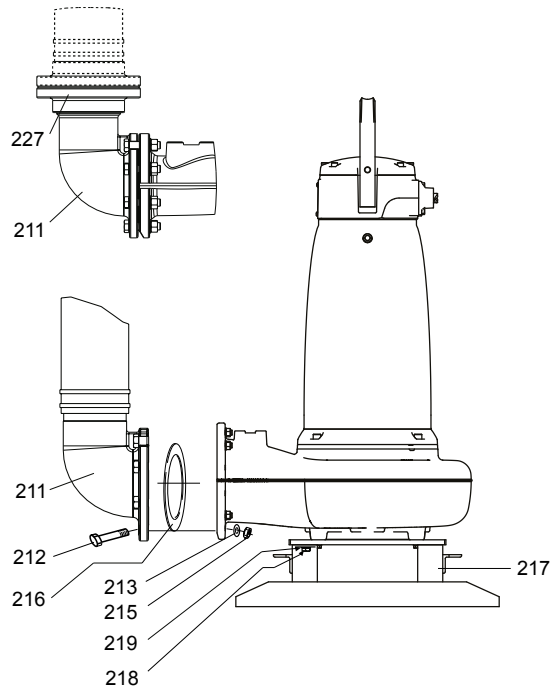
NP 3315



31423

3.3.2 NS

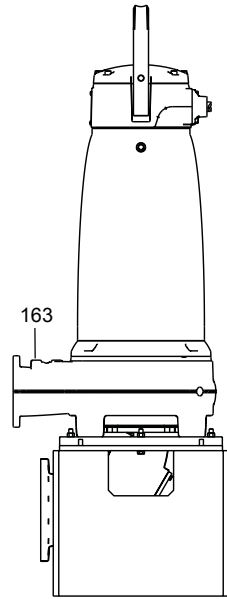
NS 3315



31424

### 3.3.3 NT

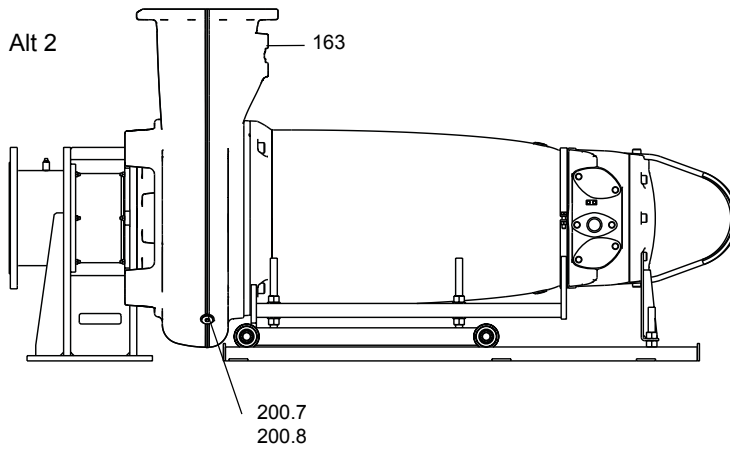
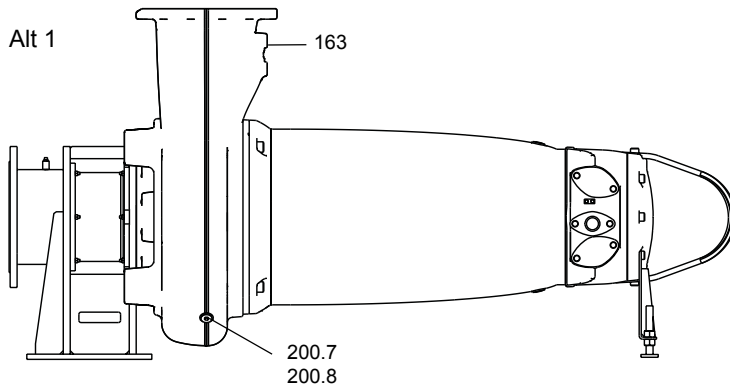
NT 3315



31425B

3.3.4 NZ

NZ 3315



31426



# 4 List of Parts

## 4.1 3315.095/185

Pos. No	Part. No	Type	Denomination	Qty/Version	
				095	185
1	716 08 00		Lifting handle	1	1
2	83 04 58		Hex.socket hd screw M16X60-A4-80	2	2
3	716 07 01	(Ex)	Cover	1	
3	716 07 00		Cover		1
5	685 86 00		Terminal plate	1	1
6	82 20 05		Tapping screw 2.9X19-C-Z-A4	4	4
7	83 45 52		Cable tie 292X3.5 MM	1	1
7	83 45 59		Cable tie 200X2.4 PA 6/6 -55+105	1	1
8	630 68 00		Data plate USE 6306801 AS SPARE PART	2	2
8	630 69 00		Certificate plate EN	2	
8	630 70 00		Certificate plate FM	2	
8	630 69 01	(Ex)	Certificate plate IECEX	2	
8	801 03 04		Name plate	1	
8	630 76 00		Plate HOT WATER PRODUCT		1
9	773 30 00		Connection plate	1	1
9	735 01 00		Connection plate	1	1
9	735 84 00		Connection plate	1	1
9	681 58 00		Plate SENSOR CONNECTED T1-T2	2	2
10	85 01 81		Hex.socket hd screw	4	4
11	83 02 73		Hex.socket hd screw M6X12-A4-70	2	
12	83 53 70		Terminal block MK 3/12,2.5MM2.380V.130GR	3	3
13	642 16 00		Earthing plate	1	
14	94 19 22		Control cable subcab 7X1,5	*	*
14	94 08 94		Control cable subcab SUBCAB 12X1.5 MM2	12	12
14	94 08 94		Control cable subcab SUBCAB 12X1.5 MM2	23	23
14	94 19 20		Control cable subcab 12X1.5 MM2 OD=18.2-21.2MM	*	*
14	94 19 21		Control cable subcab SUBCAB 24X1.5 MM2	12	12
14	94 19 21		Control cable subcab SUBCAB 24X1.5 MM2	23	23
14	94 08 95		Control cable subcab S24X1,5	12	12
14	94 08 95		Control cable subcab S24X1,5	23	23
15	642 17 01	(Ex)	Entrance flange (14)-32 MM	1	
15	642 17 00		Entrance flange (20)-32 MM		1
16	597 98 00		Sleeve	1	1
16	597 98 02		Sleeve		1

Pos. No	Part. No	Type	Denomination	Qty/Version	
				095	185
17	84 00 90		Pumpmemory	1	1
18	83 04 60		Hex.socket hd screw M16X120-A4 80	6	6
19	94 05 89		Insulating hose D=18 MM	*	*
20	83 45 60		Cable tie	4	4
22	82 74 63		O-ring 49.5X3 NBR	1	1
23	94 19 83		Motor cable subcab 4G25+S(2X0.5)	*	*
23	94 19 84		Motor cable subcab 4G35+S(2X0.5)	*	*
23	94 19 85		Motor cable subcab 3X50+2G35/2+S(2X0.5)	*	*
23	94 19 86		Motor cable subcab 3X70+2G35/2+S(2X0.5)	*	*
23	94 19 94		Motor cable subcab S3X25+3X16/3+S(4X0.5)	*	*
23	94 19 95		Motor cable subcab S3X35+3X16/3+S(4X0.5)	*	*
23	94 19 96		Motor cable subcab S3X50+3X25/3+S(4X0.5)	*	*
23	94 19 97		Motor cable subcab S3X70+3X35/3+2S(2X0.5)	*	*
24	605 61 01	(Ex)	Entrance flange (32)-41 MM	1	
24	605 61 01	(Ex)	Entrance flange (32)-41 MM	2	
24	605 61 00		Entrance flange (32)-41 MM		1
24	605 61 00		Entrance flange (32)-41 MM		2
25	84 41 09		Plate 35X2	1	1
26	83 04 53		Hex.socket hd screw M12X45-A4-80	4	3
26	83 04 53		Hex.socket hd screw M12X45-A4-80	4	4
26	83 04 53		Hex.socket hd screw M12X45-A4-80	2	2
27	81 79 61		Protective plug	6	6
28	83 50 11		Marking plate UNIT CARD F1-1	2	2
28	83 50 12		Marking plate UNIT CARD F1-2	2	2
28	83 50 51		Marking plate UNIT CARD F1-51	2	2
28	83 50 52		Marking plate UNIT CARD F1-52	2	2
28	83 50 53		Marking plate UNIT CARD F1-53	2	2
28	83 50 54		Marking plate UNIT CARD F1-61	2	2
28	83 50 55		Marking plate UNIT CARD F1-62	2	2
28	83 50 56		Marking plate UNIT CARD F1-63	2	2
28	83 50 13		Marking plate UNIT CARD F1-3	2	2
28	83 50 14		Marking plate UNIT CARD F1-4	2	2
28	83 50 19		Marking plate UNIT CARD F1-9	2	2
28	83 50 20		Marking plate UNIT CARD F1-10	2	2
28	83 50 29		Marking plate UNIT CARD F1-19	2	2
28	83 50 30		Marking plate UNIT CARD F1-20	2	2
28	82 97 59		Marking plate UNIT CARD F1-78	2	2
28	82 98 50		Marking plate UNIT CARD F1-79	2	2
28	83 50 47		Marking plate UNIT CARD F1-37	2	2

Pos. No	Part. No	Type	Denomination	Qty/Version	
				095	185
28	83 50 48		Marking plate UNIT CARD F1-38	2	2
28	83 50 11		Marking plate UNIT CARD F1-1	1	1
28	83 50 12		Marking plate UNIT CARD F1-2	1	1
31	82 74 67		O-ring 69.5X3 NBR	1	1
31	82 74 67		O-ring 69.5X3 NBR	2	2
32	716 06 01	(Ex)	Connection housing For motor cable	1	
32	716 06 03	(Ex)	Connection housing For motor cable x2	1	
32	716 06 05	(Ex)	Connection housing For motor cable For auxiliary cable	1	
32	716 06 07	(Ex)	Connection housing For motor cable x2 For auxiliary cable	1	
32	716 06 00		Connection housing For motor cable		1
32	716 06 02		Connection housing For motor cable x2		1
32	716 06 04		Connection housing For motor cable For auxiliary cable		1
32	716 06 06		Connection housing For motor cable x2 For auxiliary cable		1
33	82 75 02		O-ring 289.3X5.7 NBR	2	2
34	83 42 62		Closed-end splice 0.33-0.82 (AWG 22-18)	2	2
35	83 04 58		Hex.socket hd screw M16X60-A4-80	6	6
45	82 00 52		Hex.socket hd screw M10X30-A2-70	4	4
49	83 42 70		Cable lug 16 MM2 M10	6	6
49	83 42 71		Cable lug 25 MM2 M10	6	6
49	83 41 49		Cable lug 16 MM2	1	1
49	83 42 71		Cable lug 25 MM2 M10	4	4
49	83 42 72		Cable lug 35 MM2 M10	4	4
49	83 42 73		Cable lug 50 MM2 M10	4	4
49	83 42 72		Cable lug 35 MM2 M10	1	1
49	83 42 74		Cable lug 70 MM2 M10	3	3
49	83 42 71		Cable lug 25 MM2 M10	8	8
49	83 42 72		Cable lug 35 MM2 M10	8	8
49	83 42 73		Cable lug 50 MM2 M10	8	8
49	83 42 69		Cable lug 10 MM2 M10	1	1
49	83 42 70		Cable lug 16 MM2 M10	1	1
49	83 42 71		Cable lug 25 MM2 M10	3	3
49	83 42 69		Cable lug 10 MM2 M10	2	2
49	83 42 70		Cable lug 16 MM2 M10	2	2
49	83 42 71		Cable lug 25 MM2 M10	1	1
49	83 42 73		Cable lug 50 MM2 M10	3	3
49	83 42 71		Cable lug 25 MM2 M10	2	2
49	83 42 73		Cable lug 50 MM2 M10	6	6
53	82 00 34		Hex.socket hd screw M8X25-A2-70	1	1
53	82 00 34		Hex.socket hd screw M8X25-A2-70	3	3
56	82 35 16		Plain washer 8.4X16X1.6-A2-140HV	1	1
56	82 35 16		Plain washer 8.4X16X1.6-A2-140HV	3	3
58	82 92 77		Protective cap 100X12 MM NBR	1	1

Pos. No	Part. No	Type	Denomination	Qty/Version	
				095	185
60	82 56 26		Spring washer 119.5X100.5X1.2	1	1
61	83 30 21		Ball bearing 3311A-2Z/C3VT113	1	1
69	716 04 01	(Ex)	Stator housing	1	
69	716 04 00		Stator housing		1
72	82 75 05		O-ring 339.3X5.7 NBR	1	1
73	703 71 01	(Ex)	Shaft unit 35-35-4	1	1
73	703 71 00	(Ex)	Shaft unit 35-45-4	1	1
73	703 72 01	(Ex)	Shaft unit 35-35-6	1	1
73	703 72 00	(Ex)	Shaft unit 35-45-6	1	1
73	703 73 01	(Ex)	Shaft unit 35-35-8	1	1
73	703 73 00	(Ex)	Shaft unit 35-45-8	1	1
76	83 97 36		Thermal detectors 140GR.C-YEL-SINGLE/L=1300	3	3
77	84 03 82		Thermal detectors	3	3
78	665 86 00		Temperature sensor PT100, 2-LEDARE 1500MM	1	1
78	665 86 00		Temperature sensor PT100, 2-LEDARE 1500MM	1	3
78	665 86 00		Temperature sensor PT100, 2-LEDARE 1500MM	3	3
79	610 95 01		Stator 35-35-4a 50 Hz 4-poles 380V-400V D 660V-690V Y 60 Hz 4-poles 440V-480V D	1	1
79	610 95 02		Stator 35-35-4a 50 Hz 4-poles 415V D	1	1
79	610 95 04		Stator 35-35-4a 50 Hz 4-poles 500V D 60 Hz 4-poles 575V-600V D	1	1
79	610 95 06		Stator 35-35-4a 60 Hz 4-poles 380V D	1	1
79	610 96 01		Stator 35-45-4a 50 Hz 4-poles 380V-400V D 660V-690V Y 60 Hz 4-poles 440V-480V D	1	1
79	610 96 02		Stator 35-45-4a 50 Hz 4-poles 415V D	1	1
79	610 96 04		Stator 35-45-4a 50 Hz 4-poles 500V D 60 Hz 4-poles 575V-600V D	1	1
79	610 96 06		Stator 35-45-4a 60 Hz 4-poles 380V D	1	1
79	610 98 01		Stator 35-35-6a 60 Hz 6-poles 460V-480V D 50 Hz 6-poles 400V D 690V Y	1	1
79	610 98 02		Stator 35-35-6a 50 Hz 6-poles 415V D	1	1
79	610 98 04		Stator 35-35-6a 50 Hz 6-poles 500V D 60 Hz 6-poles 575V-600V D	1	1
79	610 98 06		Stator 35-35-6a 60 Hz 6-poles 380V D	1	1
79	610 98 09		Stator 35-35-6a 50 Hz 6-poles 380V D 660V Y 60 Hz 6-poles 440V D	1	1
79	610 99 01		Stator 35-45-6a 50 Hz 6-poles 380V-400V D 660V-690V Y 60 Hz 6-poles 440V-480V D	1	1
79	610 99 02		Stator 35-45-6a 50 Hz 6-poles 415V D	1	1

Pos. No	Part. No	Type	Denomination	Qty/Version	
				095	185
79	610 99 04		Stator 35-45-6a 50 Hz 6-poles 500V D 60 Hz 6-poles 575V-600V D	1	1
79	610 99 06		Stator 35-45-6a 60 Hz 6-poles 380V D	1	1
79	619 20 01	(Ex)	Stator 35-35-8a 50 Hz 8-poles 400V D 60 Hz 8-poles 460V-480V D	1	1
79	619 20 02	(Ex)	Stator 35-35-8a 50 Hz 8-poles 415V D	1	1
79	619 20 04	(Ex)	Stator 35-35-8a 50 Hz 8-poles 500V D 60 Hz 8-poles 575V-600V D	1	1
79	619 20 06	(Ex)	Stator 35-35-8a 60 Hz 8-poles 380V D	1	1
79	619 20 08	(Ex)	Stator 35-35-8a 50 Hz 8-poles 380V D 60 Hz 8-poles 440V D	1	1
79	619 21 01	(Ex)	Stator 35-45-8a 50 Hz 8-poles 380V-415V D 60 Hz 8-poles 460V-480V D	1	1
79	619 21 04	(Ex)	Stator 35-45-8a 50 Hz 8-poles 500V D 60 Hz 8-poles 575V-600V D	1	1
79	619 21 06	(Ex)	Stator 35-45-8a 60 Hz 8-poles 380V D	1	1
79	619 21 08	(Ex)	Stator 35-45-8a 60 Hz 8-poles 440V D	1	1
80	94 05 81		Insulating hose D=5 MM	*	*
82	716 03 01		Cooling jacket STAINLESS STEEL	1	1
83	82 78 76		O-ring 370X5.7 NBR	1	1
84	82 75 12		O-ring 479.3X5.7 NBR	1	1
88	655 80 13		Cable entry unit 32-35 MM	1	1
88	655 80 14		Cable entry unit 35-38 MM	1	1
88	655 80 15		Cable entry unit 38-41 MM	1	1
88	655 80 13		Cable entry unit 32-35 MM	2	2
88	655 80 14		Cable entry unit 35-38 MM	2	2
88	655 80 12		Cable entry unit 29-32 MM	2	2
88	655 80 15		Cable entry unit 38-41 MM	2	2
88	655 80 16		Cable entry unit 41-44 MM	1	1
88	655 80 17		Cable entry unit 44-47 MM	1	1
88	655 80 16		Cable entry unit 41-44 MM	2	2
88	655 80 17		Cable entry unit 44-47 MM	2	2
96	82 27 26		Lock nut M6-A4-70	1	1
97	82 00 52		Hex.socket hd screw M10X30-A2-70	1	1
97	690 25 00		Hexagon screw spec.	1	1
98	665 86 00		Temperature sensor PT100, 2-LEDARE 1500MM	1	1
98	665 86 00		Temperature sensor PT100, 2-LEDARE 1500MM	2	2
99	669 88 00		Vibration sensor VIS10, CABLE=1 M	1	1
100	518 89 02		Leakage sensor (FLS)	1	1
101	650 51 01		Cable unit	1	1
102	504 78 09		Cable unit (FLS)	1	1
103	663 04 00	(Ex)	Level sensor FLS10	1	
103	791 99 00		Level sensor		1

Pos. No	Part. No	Type	Denomination	Qty/Version	
				095	185
105	608 53 01	(Ex)	Bearing holder	1	
105	608 53 00		Bearing holder		1
106	718 81 00		Special washer	1	1
106	718 81 00		Special washer	2	2
107	82 59 29		Retaining ring SGA 95	1	1
108	82 44 28		Supporting washer 95X115X3.5	2	2
109	83 30 28		Ball bearing 3319A-2Z/C3VT113	1	1
110	83 07 64		Retaining ring 7 3/4"	1	1
120	642 13 00		Plug	1	1
122	82 76 85		O-ring 17X3 NBR	1	1
129	608 56 00		Seal housing cover	1	1
130	82 78 84		O-ring 405.26X3.53 NBR	1	1
131	82 75 12		O-ring 479.3X5.7 NBR	1	1
133	83 04 58		Hex.socket hd screw M16X60-A4-80	6	6
141	641 70 30		Mechanical seal WCCR/WCCR, WCCR/WCCR FPM	1	1
141	641 70 31		Mechanical seal WCCR/WCCR, RSIC/ RSIC FPM	1	1
158	783 70 00		Impeller LT 50Hz Curve code: 810	1	1
158	783 70 04		Impeller LT 50Hz Curve code: 811	1	1
158	783 70 08		Impeller LT 50Hz Curve code: 812	1	1
158	783 70 13		Impeller LT 50Hz Curve code: 813 LT 60Hz Curve code: 813	1	1
158	783 70 18		Impeller LT 50Hz Curve code: 814 LT 60Hz Curve code: 814	1	1
158	783 70 24		Impeller LT 60Hz Curve code: 815	1	1
158	783 70 31		Impeller LT 60Hz Curve code: 816	1	1
158	783 70 38		Impeller LT 60Hz Curve code: 817	1	1
158	789 99 00		Impeller LT 50Hz Curve code: 620	1	1
158	789 99 06		Impeller LT 50Hz Curve code: 621	1	1
158	789 99 12		Impeller LT 50Hz Curve code: 622	1	1
158	789 99 18		Impeller LT 50Hz Curve code: 623	1	1
158	789 99 24		Impeller LT 50Hz Curve code: 624 LT 60Hz Curve code: 624	1	1
158	789 99 31		Impeller LT 50Hz Curve code: 625 LT 60Hz Curve code: 625	1	1
158	789 99 38		Impeller LT 60Hz Curve code: 626	1	1
158	789 99 44		Impeller LT 60Hz Curve code: 627	1	1
158	789 99 50		Impeller LT 60Hz Curve code: 628	1	1
158	789 98 00		Impeller MT 50Hz Curve code: 630	1	1
158	789 98 07		Impeller MT 50Hz Curve code: 631	1	1
158	789 98 14		Impeller MT 50Hz Curve code: 632	1	1
158	789 98 21		Impeller MT 50Hz Curve code: 633	1	1
158	789 98 29		Impeller MT 50Hz Curve code: 634 MT 60Hz Curve code: 634	1	1

Pos. No	Part. No	Type	Denomination	Qty/Version		
				095	185	
158	789 98 35		Impeller	MT 50Hz Curve code: 635 MT 60Hz Curve code: 635	1	1
158	789 98 42		Impeller	MT 50Hz Curve code: 636 MT 60Hz Curve code: 636	1	1
158	789 98 49		Impeller	MT 60Hz Curve code: 637	1	1
158	789 98 57		Impeller	MT 60Hz Curve code: 638	1	1
158	783 52 00		Impeller	HT 50Hz Curve code: 450	1	1
158	783 52 04		Impeller	HT 50Hz Curve code: 451	1	1
158	783 52 08		Impeller	HT 50Hz Curve code: 452	1	1
158	783 52 12		Impeller	HT 50Hz Curve code: 453 HT 60Hz Curve code: 453	1	1
158	783 52 16		Impeller	HT 50Hz Curve code: 454 HT 60Hz Curve code: 454	1	1
158	783 52 20		Impeller	HT 50Hz Curve code: 455 HT 60Hz Curve code: 455	1	1
158	783 52 24		Impeller	HT 50Hz Curve code: 456 HT 60Hz Curve code: 456	1	1
158	783 52 29		Impeller	HT 50Hz Curve code: 457 HT 60Hz Curve code: 457	1	1
158	783 52 33		Impeller	HT 50Hz Curve code: 458 HT 60Hz Curve code: 458	1	1
158	783 52 37		Impeller	HT 50Hz Curve code: 459 HT 60Hz Curve code: 459	1	1
158	783 52 41		Impeller	HT 60Hz Curve code: 460	1	1
162	719 29 00		Cover		1	1
163	82 69 41		Protective plug F11		4	4
169	716 70 00		Screw unit		1	1
170	83 02 16		Hex.socket hd screw M10X150-A4-70	LT	1	1
170	83 03 38		Hex.socket hd screw M10X120-A4-70	LT	1	1
170	83 02 15		Hex.socket hd screw M10X70-A4-70	MT	1	1
170	83 03 26		Hex.socket hd screw M10X40-A4-70	HT	1	1
200	704 77 00		Pump housing	LT D350 Undrilled inlet	1	1
200	704 77 01		Pump housing	LT DN 350 Drilled acc. to: EN 1092-2 tab. 8	1	1
200	704 77 05		Pump housing	LT DN 350 Drilled acc. to: ANSI B16.1-89; tab.5	1	1
200	704 77 07		Pump housing	LT DN 350 Drilled acc. to: EN 1092-2 tab. 9	1	1
200	704 77 31		Pump housing	LT DN 350 Drilled acc. to: EN 1092-2 tab. 8 Installation: Z Drainage plug	1	1
200,7	80 14 40		Plug		1	1
200,8	80 14 42		Gasket		1	1
200	704 77 35		Pump housing	LT DN 350 Drilled acc. to: ANSI B16.1-89; tab.5 Installation: Z Drainage plug	1	1

Pos. No	Part. No	Type	Denomination	Qty/Version	
				095	185
200,7	80 14 40		Plug	1	1
200,8	80 14 42		Gasket	1	1
200	704 77 37		Pump housing LT DN 350 Drilled acc. to: EN 1092-2 tab. 9 Installation: Z Drainage plug	1	1
200,7	80 14 40		Plug	1	1
200,8	80 14 42		Gasket	1	1
200	704 74 00		Pump housing LT DN 300 Undrilled inlet	1	1
200	704 74 01		Pump housing LT DN 300 Drilled acc. to: EN 1092-2 tab. 8	1	1
200	704 74 05		Pump housing LT DN 300 Drilled acc. to: ANSI B16.1-89; tab.5	1	1
200	704 74 07		Pump housing LT DN 300 Drilled acc. to: EN 1092-2 tab. 9	1	1
200	704 74 31		Pump housing LT DN 300 Drilled acc. to: EN 1092-2 tab. 8 Installation: Z Drainage plug	1	1
200,7	80 14 40		Plug	1	1
200,8	80 14 42		Gasket	1	1
200	704 74 35		Pump housing LT DN 300 Drilled acc. to: ANSI B16.1-89; tab.5 Installation: Z Drainage plug	1	1
200,7	80 14 40		Plug	1	1
200,8	80 14 42		Gasket	1	1
200	704 74 37		Pump housing LT DN 300 Drilled acc. to: EN 1092-2 tab. 9 Installation: Z Drainage plug	1	1
200,7	80 14 40		Plug	1	1
200,8	80 14 42		Gasket	1	1
200	704 55 00		Pump housing MT DN 250 Undrilled inlet	1	1
200	704 55 01		Pump housing MT DN 250 Drilled acc. to: EN 1092-2 tab. 8	1	1
200	704 55 05		Pump housing MT DN 250 Drilled acc. to: ANSI B16.1-89; tab.5	1	1
200	704 55 07		Pump housing MT DN 250 Drilled acc. to: EN 1092-2 tab. 9	1	1
200	704 55 31		Pump housing MT DN 250 Drilled acc. to: EN 1092-2 tab. 8 Installation: Z Drainage plug	1	1
200,7	80 14 40		Plug	1	1
200,8	80 14 42		Gasket	1	1
200	704 55 35		Pump housing MT DN 250 Drilled acc. to: ANSI B16.1-89; tab.5 Installation: Z Drainage plug	1	1
200,7	80 14 40		Plug	1	1
200,8	80 14 42		Gasket	1	1
200	704 55 37		Pump housing MT DN 250 Drilled acc. to: EN 1092-2 tab. 9 Installation: Z Drainage plug	1	1
200,7	80 14 40		Plug	1	1
200,8	80 14 42		Gasket	1	1
200	704 58 00		Pump housing HT DN 150 Undrilled inlet	1	1



Pos. No	Part. No	Type	Denomination	Qty/Version		
				095	185	
200	704 58 06		Pump housing	HT DN 150 Drilled acc. to: EN 1092-2 tab. 9 ANSI B16.1-89; tab.5	1	1
200	704 58 36		Pump housing	HT DN 150 Drilled acc. to: ANSI B16.1-89; tab.5 EN 1092-2 tab. 9 Installation: Z Drainage plug	1	1
	200,7 80 14 40		Plug		1	1
	200,8 80 14 42		Gasket		1	1
209	454 87 00		Sliding bracket	No of poles: 8 LT	1	1
209	607 38 00		Sliding bracket	LT MT HT	1	1
209	669 84 00		Sliding bracket	Optional	1	1
210	83 04 58		Hex.socket hd screw M16X60-A4-80		4	4
211	457 68 00		Discharge connection DN300	No of poles: 6 LT DN 250	1	1
211	479 26 00		Discharge connection DN300	MT DN 250	1	1
211	295 57 00		Discharge connection DN150	HT DN 150	1	1
211	309 31 00		Discharge connection DN150	HT Thread : 6-8 NPSM Outer DN 150	1	1
211	309 31 01		Discharge connection DN150	HT Thread : ISO G6 Outer Quick coupling: Quick Coupling DN 150	1	1
212	84 34 35		Hexagon head screw M20X90-A2-70	MT	4	4
212	84 34 34		Hexagon head screw M20X80-A2-70	HT	8	8
213	82 35 26		Plain washer 21X37X3-A2-170HV	No of poles: 6 LT HT MT	8	8
213	82 35 26		Plain washer 21X37X3-A2-170HV	No of poles: 6 LT HT MT	16	16
214	80 95 96		Stud 24X100-A2-70	No of poles: 8 LT	2	2
214	80 96 04		Stud 24X120-A2-70	No of poles: 8 LT	2	2
	214,1 82 23 63		Hexagon nut M24-A2-70		4	4
	214,2 82 35 28		Plain washer 25X44X4-A2-170HV		4	4
215	82 23 62		Hexagon nut M20-A2-70	HT No of poles: 6 LT MT	4	4
215	82 23 62		Hexagon nut M20-A2-70	No of poles: 6 LT HT MT	8	8
216	380 25 01		Gasket 370 MM	No of poles: 6 LT	1	1
216	295 64 00		Gasket 6"	HT	1	1
217	437 88 01		Stand compl. S/T INSTALLATION		1	1
218	84 34 05		Hexagon head screw M16X50-A2-70		4	4
219	82 35 23		Plain washer 17X30X3-A2-170HV		4	4
221	384 45 00		Gasket 8"		1	1
227	83 19 36		Coupling part		1	1
229	667 40 01		Sticker		2	2
231	93 00 79		Shrink hose ID=12.7 MM		*	*
233	797 57 00		Terminal plate unit		1	1
234	618 83 00		Closing link		3	3

Pos. No	Part. No	Type	Denomination	Qty/Version	
				095	185
235	82 23 83		Hexagon nut M10-5170	6	6
236	82 27 28		Lock nut M10-A4-70	6	6
237	83 38 96		Disc spring	12	12
239	650 84 03		El.lead through unit	2	2
240	607 48 05		Spring	1	1
241	82 75 04		O-ring 319.3X5.7 NBR	1	1
242	608 54 01	(Ex)	Adapter	1	
242	608 55 11	(Ex)	Adapter Cooling jacket	1	
242	608 54 00		Adapter		1
242	608 55 10		Adapter Cooling jacket		1
243	83 04 61		Hex.socket hd screw M12X25-A4-80	2	2
245	82 75 12		O-ring 479.3X5.7 NBR	1	1
246	82 78 84		O-ring 405.26X3.53 NBR	1	1
247	82 81 73		O-ring 149.3X5.7 FPM	1	1
251	642 13 00		Plug	2	2
252	82 76 85		O-ring 17X3 NBR	2	2
253	716 02 01		Cooling jacket ALUMINUM	1	1
254	608 57 02		Flow diffuser	1	1
256	608 44 00		Wire bow	4	4
257	82 44 38		Supporting washer 170X200X3.5	1	1
258	731 74 00		Sleeve unit	1	1
	258,1 716 12 00		Adjustment screw	1	1
	258,2 716 11 00		Sleeve	1	1
270	608 31 00		Lock washer	1	
313	82 81 59		O-ring 119.5X3 FPM	1	1
800	80 33 01		O-ring kits NITRIL	1	1
800	80 33 02		O-ring kits VITON	1	1
900	788 09 00		Basic repair kit	1	1
900	788 10 00		Basic repair kit	1	1
901	90 20 76		Monopropylene glycol	*	*
912	82 76 85		O-ring 17X3 NBR	3	3